



**BDA APPROVED**  
**UPPERAPRJ724286**



*Let Our Family  
Show Your Family  
The Way To Your Dream Home*



# *Our Completed Projects*



**MEGA MANSIONS**



**MEGA MANSIONS  
160 DUPLEX VILLAS**



**MEGA DREAM HOMES  
56 APARTMENTS**



**MEGA DREAM HOMES  
185 APARTMENTS**



**MEGA DREAM HOMES**



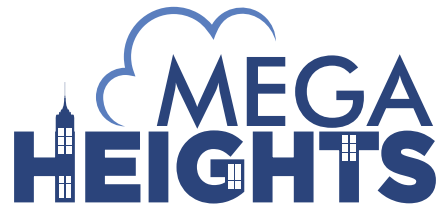
**MEGA DREAM HOMES  
339 VILLAS**



**MEGA CITY  
104 APARTMENTS**



**MEGA CITY  
70 VILLAS**



DESIGNING HOMES THAT GRIP WITH ONE'S REAL LIFESTYLE.  
HOMES THAT NOURISH ONE'S WELL-BEING &  
ADD MEANING TO ONE'S EXISTENCE

We are Mega Group. We are builders with one goal and one ideal: "Better Living". We have been working tirelessly to bring the future one step closer to the present providing the utmost quality of living, betterment of neighbourhood and making every single dwelling better than the previous one. These are some strong ideals on which the foundation of our company stands.

We have been delivering every single promise since day one and aim to do so in the future because only thing bigger and more comfortable than a house is a warm heart with a fulfilled wish and promise, the exact thing we wish to look in the eye of our customer.

"The most important asset you can own in your business is the attention of your customer. If you don't own it, someone else does."

*Urban Luxury Homes*





## *About Project*

Situated in the heart of the city, this is the most ambitious and elegant project this city has ever seen before in its history. The prime location and the aesthetic design is just the tip of the iceberg for this project.

Packed with abundant amenities and lush green gardens, this project offers something far better than any group housing project in the city, peace of mind and easy living.

Every aspect of the project has been dedicated in making the life of the residents as peaceful and simple as possible. The premium features and the attention to detail is eye-catching and soul soothing at the same time.

COME SEE FOR YOURSELF.





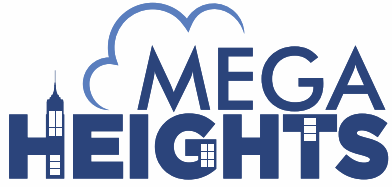












# Projects Highlights

260 PREMIUM APARTMENTS

2 BHK, 3 BHK, 3 BHK WITH SERVANT ROOM



SPRAWLING LAWNS & WONDERFULLY DESIGNED PODIUM



CLUB HOUSE WITH MANY FACILITIES



BEAUTIFULLY DESIGNED LIFT LOBBIES AND WAITING AREAS



HIGH SPEED ELEVATORS



SWIMMING POOL



PET PARK



TOT LOT



CONVENIENCE SHOPS



CAR WASHING AREA



24/7 SECURITY





AC IN ALL BEDROOMS AND LIVING ROOM



LED LIGHTS



FANS & EXHAUSTS



HIGHLY AESTHETIC FALSE CEILING



PREMIUM CHINAWARE AND CP FITTINGS



BRANDED MODULAR KITCHEN WITH ELECTRIC CHIMNEY



SPACIOUS BALCONIES



LARGE UPVC WINDOWS



DIGITAL LOCK ON MAIN DOOR



40MM THICK DOORS FOR GRANDEUR AND SAFETY



BIG SIZE TILES IN ALL FLOORINGS



VANITIES IN ALL BATHROOMS

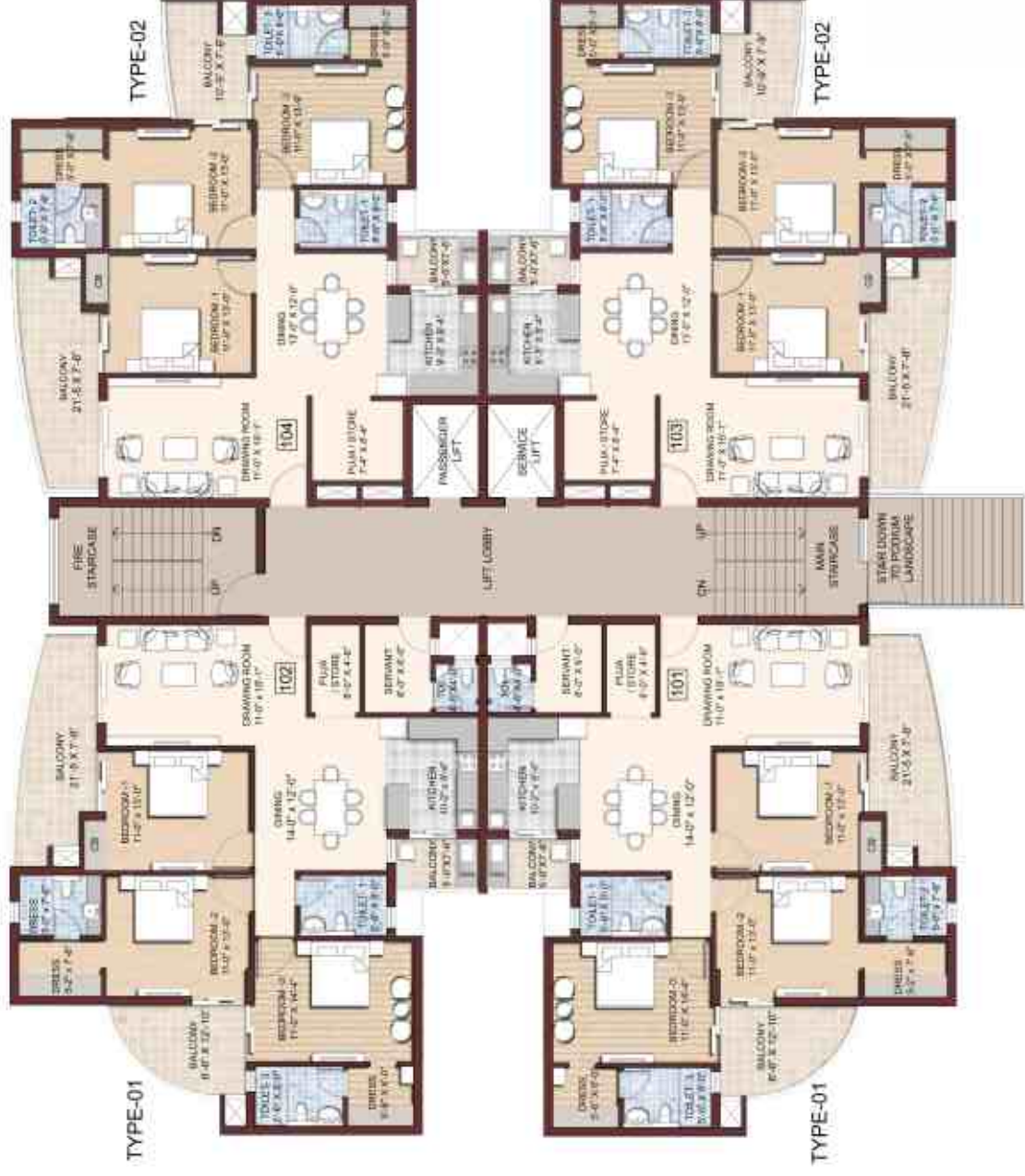


SHOWER PARTITIONS



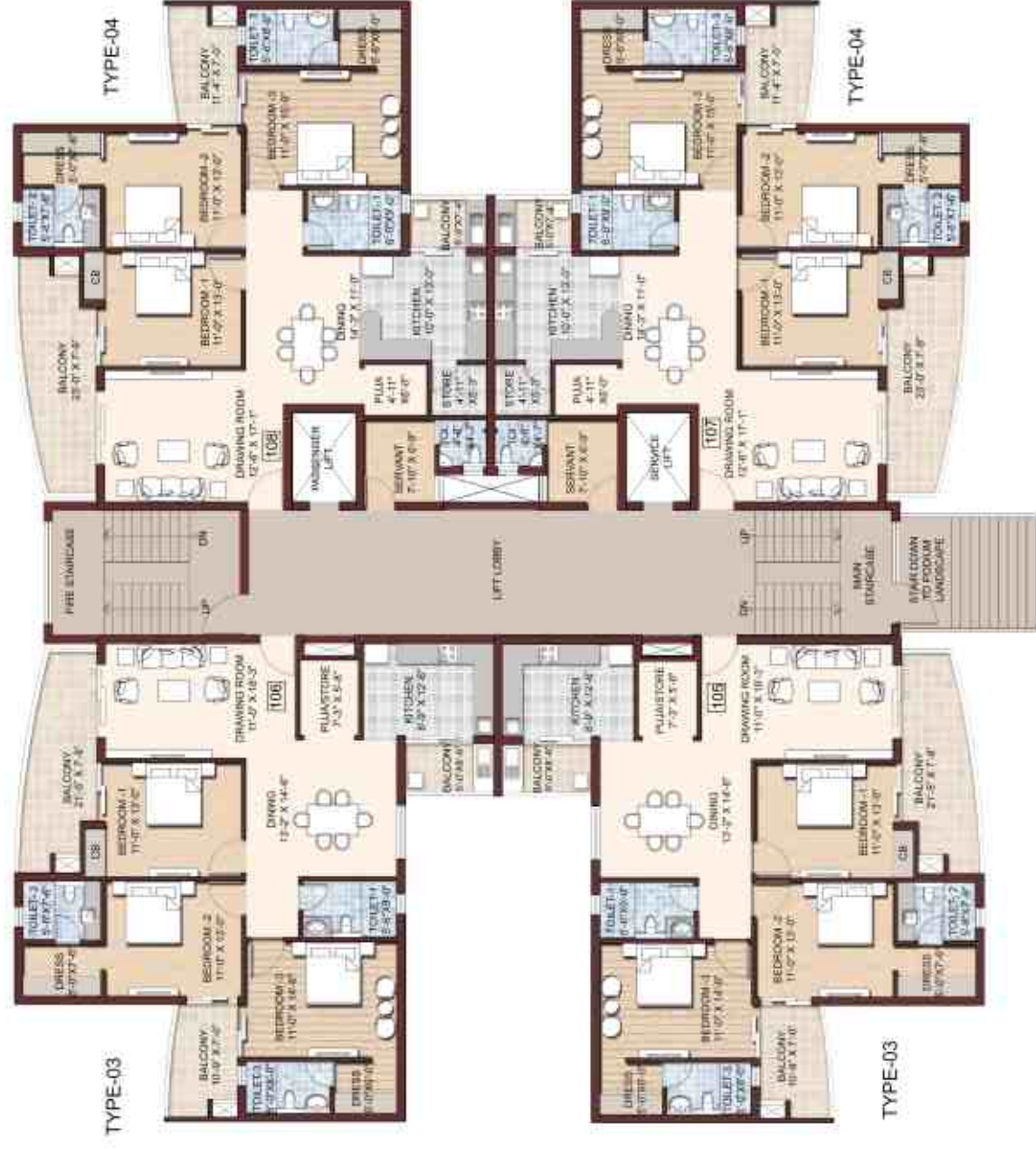
SPECIAL UTILITY BALCONY WITH DOUBLE BOWL SINK & SOLAR HEATED WATER

# Tower A

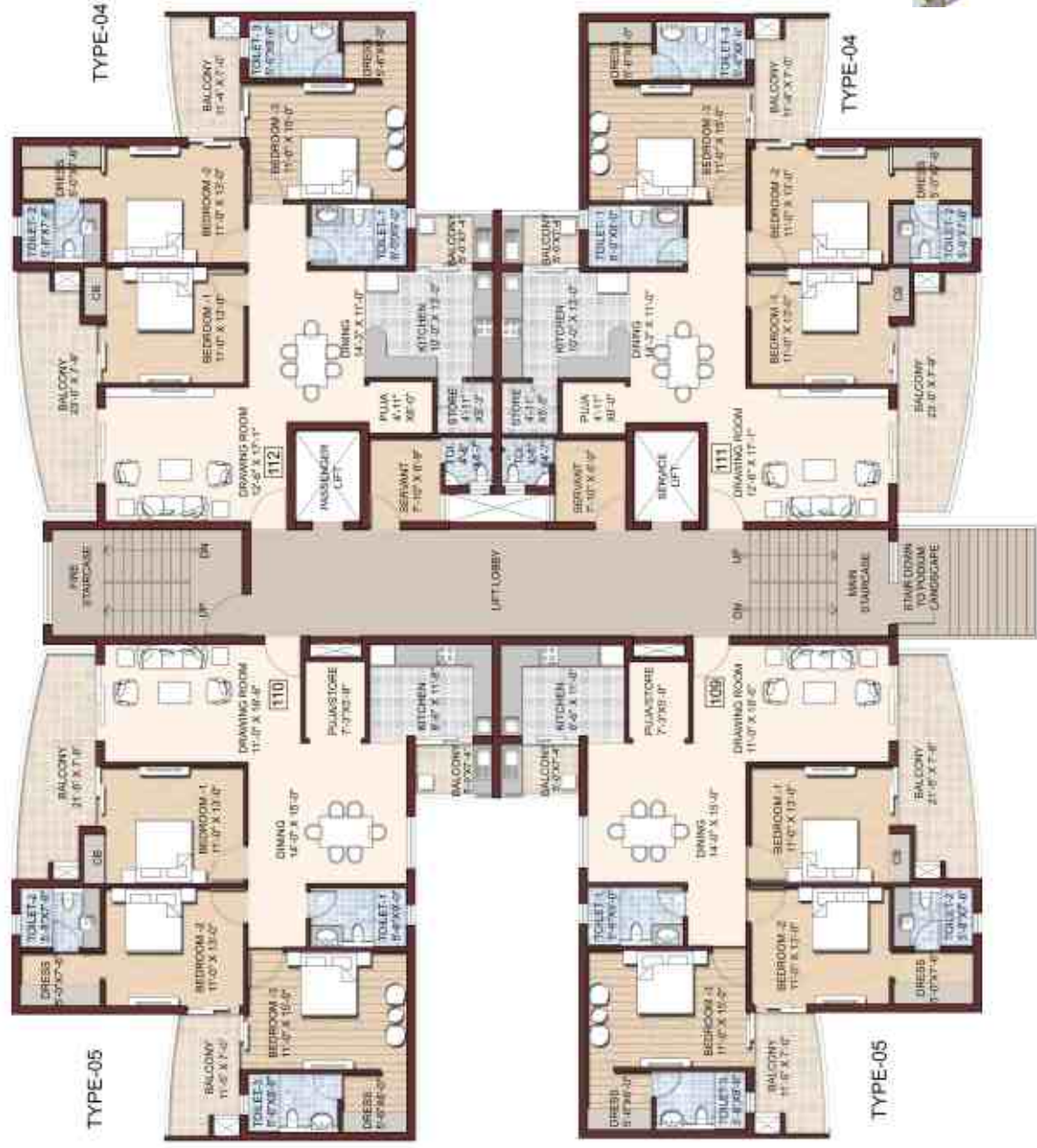




# Tower B



# Tower C





# Tower D







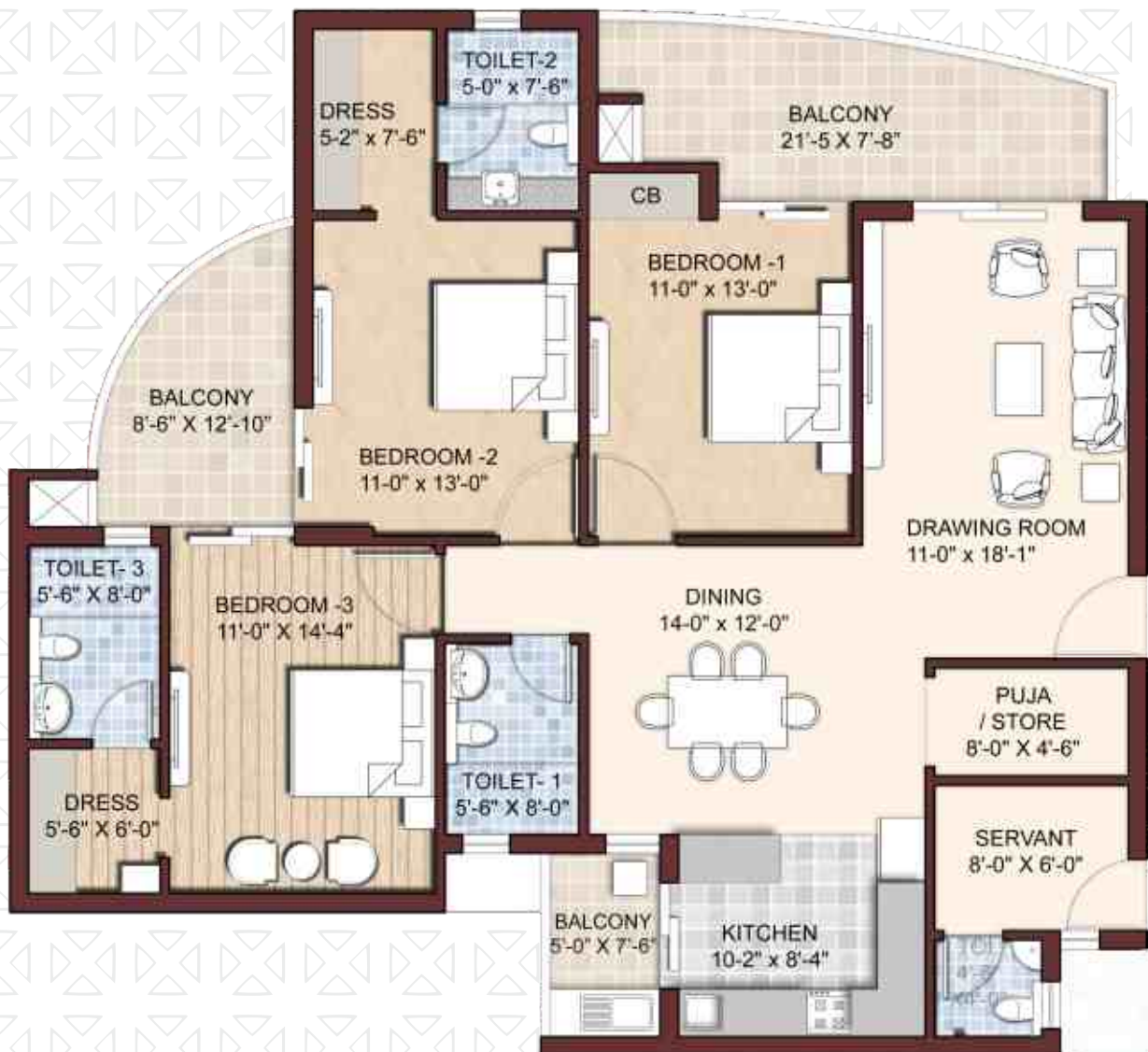




# UNIT PLANS

## Tower A / Type 01 / 3.5 BHK

3 Bedrooms ◀ 3 Toilets ◀ 2 Dressings ◀ Puja/Store ◀  
 Drawing + Dining ◀ Kitchen ◀ 3 Balconies ◀ Servant Room ◀  
 With Toilet



Disclaimer: The Proposed Balconies are Curved in Shape -  
 Maximum Size of 2 Sides are mentioned

CARPET AREA = 117.90 SQ.M / 1269 SQFT ◀  
 BALCONY AREA = 24.14 SQ.M / 259.84 SQFT ◀  
 BUILT UP AREA = 130.45 SQ.M / 1404.16 SQFT ◀  
 SUPER AREA = 188.60 SQ.M / 2029 SQFT ◀

## Tower A / Type 02 / 3 BHK

- ▶ 3 Bedrooms ▶ 3 Toilets ▶ 2 Dressings ▶ Puja/Store
- ▶ Drawing + Dining ▶ Kitchen ▶ 3 Balconies



- ♦ CARPET AREA = 110.34 SQ.M / 1187.69 SQFT
- ♦ BALCONY AREA = 22.95 SQ.M / 247.03 SQFT
- ♦ BUILT UP AREA = 122.04 SQ.M / 1313.63 SQFT
- ♦ SUPER AREA = 176.73 SQ.M / 1901.61 SQFT



Disclaimer: The Proposed Balconies are Curved in Shape - Maximum Size of 2 Sides are mentioned



## Tower B / Type 03 / 3 BHK

3 Bedrooms ◀ 3 Toilets ◀ 2 Dressings ◀ Puja/Store ◀  
Drawing + Dining ◀ Kitchen ◀ 3 Balconies ◀



Disclaimer: The Proposed Balconies are Curved in Shape -  
Maximum Size of 2 Sides are mentioned

CARPET AREA = 117.86 SQ.M / 1268.64 SQFT ♦  
BALCONY AREA = 22.47 SQ.M / 241.86 SQFT ♦  
BUILT UP AREA = 130.11 SQ.M / 1400.50 SQFT ♦  
SUPER AREA = 186.15 SQ.M / 2002.97 SQFT ♦



## Tower B & C / Type 04 / 3.5 BHK

- ▶ 3 Bedrooms ▶ 3 Toilets ▶ 2 Dressings ▶ 1 Puja ▶ 1 Store
- ▶ Drawing + Dining ▶ Kitchen ▶ 3 Balconies ▶ Servant Room With Toilet



- ♦ CARPET AREA = 127.72 SQ.M / 1374.77 SQFT
- ♦ BALCONY AREA = 23.46 SQ.M / 252.52 SQFT
- ♦ BUILT UP AREA = 141.77 SQ.M / 1526 SQFT
- ♦ SUPER AREA = 201.58 SQ.M / 2169 SQFT

Disclaimer: The Proposed Balconies are Curved in Shape - Maximum Size of 2 Sides are mentioned

## Tower C / Type 05 / 3 BHK

3 Bedrooms ◀ 3 Toilets ◀ 2 Dressings ◀ Puja/Store ◀  
Drawing + Dining ◀ Kitchen ◀ 3 Balconies ◀



Disclaimer: The Proposed Balconies are Curved in Shape -  
Maximum Size of 2 Sides are mentioned

CARPET AREA = 119.96 SQ.M / 1291.24 SQFT ◊  
BALCONY AREA = 22.56 SQ.M / 242.83 SQFT ◊  
BUILT UP AREA = 132.68 SQ.M / 1428.16 SQFT ◊  
SUPER AREA = 189.39 SQ.M / 2037.87 SQFT ◊



## Tower D / Type 06 / 2 BHK

- ▶ 2 Bedrooms ▶ 2 Toilets ▶ 2 Dressings ▶ Puja/Store
- ▶ Drawing/Dining ▶ Kitchen ▶ 2 Balconies



- ◆ CARPET AREA = 78.14 SQ.M / 841.09 SQ.FT
- ◆ BALCONY AREA = 19.23 SQ.M / 207 SQ.FT
- ◆ BUILT UP AREA = 87.93 SQ.M / 946.47 SQ.FT
- ◆ SUPER AREA = 130.73 SQ.M / 1406.71 SQ.FT



Disclaimer: The Proposed Balconies are Curved in Shape -  
Maximum Size of 2 Sides are mentioned

## Tower D / Type 07 / 2 BHK

2 Bedrooms ◀ 2 Toilets ◀ 2 Dressings ◀ Puja/Store ◀  
Drawing/Dining ◀ Kitchen ◀ 2 Balconies ◀

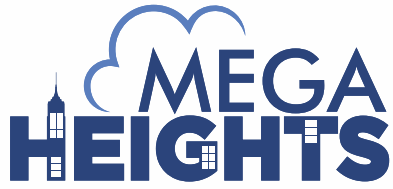


Disclaimer: The Proposed Balconies are Curved in Shape -  
Maximum Size of 2 Sides are mentioned

CARPET AREA = 78.14 SQ.M / 841.09 SQFT ◀  
BALCONY AREA = 17.47 SQ.M / 188.04 SQFT ◀  
BUILT UP AREA = 87.93 SQ.M / 946.47 SQFT ◀  
SUPER AREA = 128.59 SQ.M / 1383.60 SQFT ◀







# Club House



YOGA ROOM



GYMNASIUM



HOME THEATRE



MULTIPURPOSE HALL



KIDS GAMES ROOM



READING ROOM



INDOOR RECREATION ROOM







## DRAWING + DINING

- FLOOR -** Glazed vitrified high gloss tiles
- WALLS -** Paint over POP punning for a rich smooth look
- CEILING -** Highly aesthetic false ceiling
- WINDOWS -** UPVC window with 3 tracks including a mesh door
- DOOR -** 8ft. 40mm thick modular panel door with digital lock



## KITCHEN

- FLOOR -** Glazed vitrified high gloss tiles
- WALLS -** Paint over POP punning for a rich smooth look
- WINDOWS -** UPVC window with 3 tracks including a mesh door
- CHIMNEY -** Branded chimney
- SINK -** Stainless steel sink
- WORK STATION -** Premium quality granite/tile

## Other Features

- LIGHTS -** Concealed/ COB LED lights
- FANS -** All fans included from a premium brand
- SWITCHES -** Modular high quality switches
- PAINT -** High gloss acrylic paint

- AC -** AC in all bedrooms and living room
- EXHAUSTS -** Exhausts in all bathrooms & servant room
- WIRES -** Copper wiring from a premium brand



# Specifications



## BEDROOM

- FLOOR -** Glazed vitrified high gloss tiles
- WALLS -** Paint over POP punning for a rich smooth look
- CEILING -** Highly aesthetic false ceiling
- WINDOWS -** UPVC window with 3 tracks including a mesh door
- DOOR -** 40mm thick modular panel doors



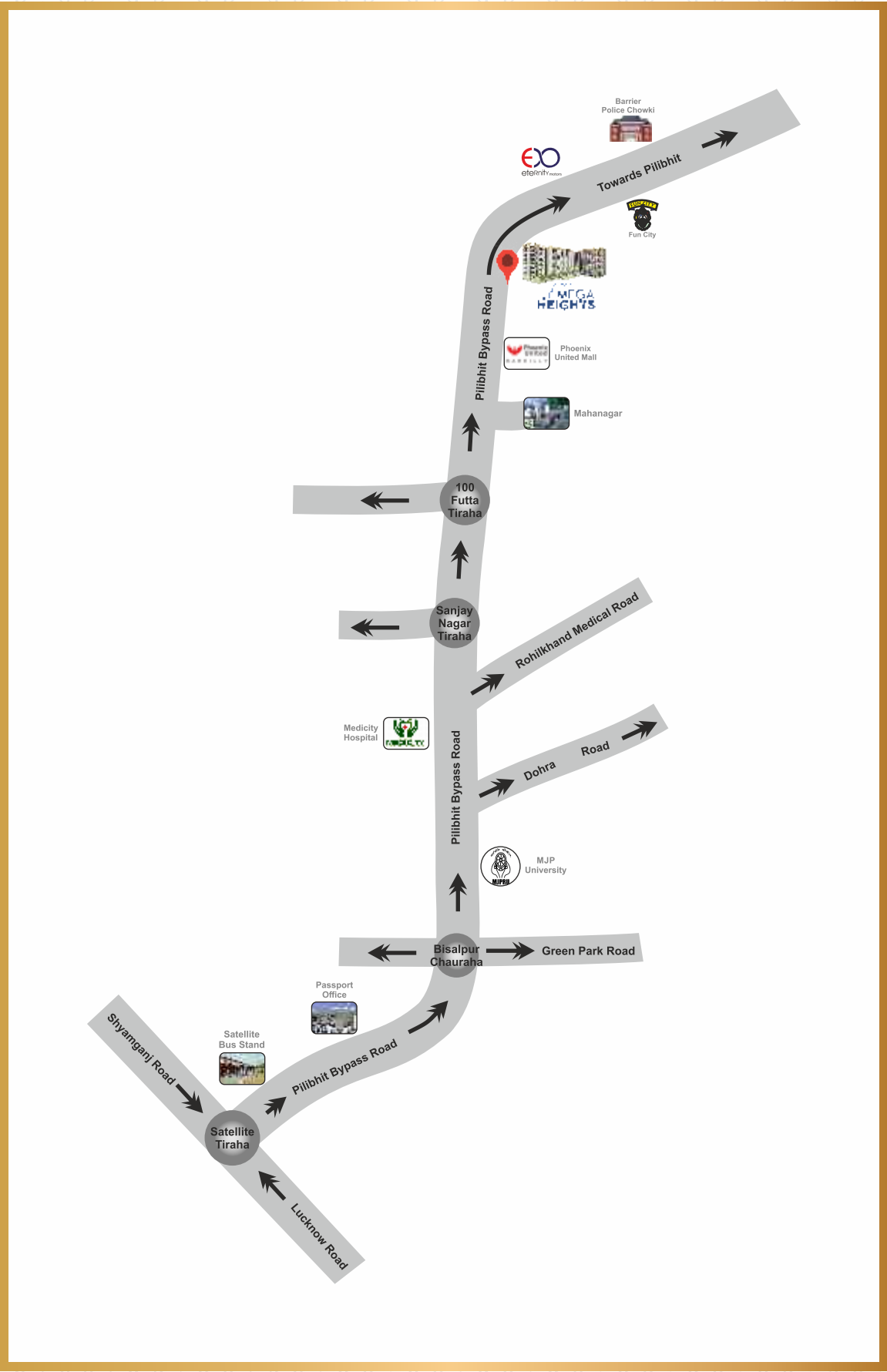
## BATHROOM

- FLOOR -** Anti skid tiles
- WALLS -** Glazed vitrified tiles upto 7ft
- CEILING -** False ceiling
- CHINAWARE -** Premium quality
- CP FITTINGS -** Premium quality
- VENTILATOR -** UPVC ventilator with exhaust attached
- VANITY -** Storage space to add utility

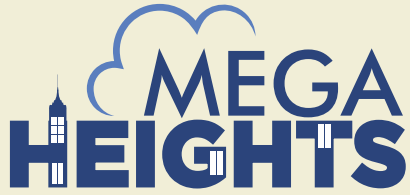
- STRUCTURE -** Earthquake resistant RCC structure
- STP -** Sewage treatment plant as per norms
- SOLAR HEATING -** Solar heated water connection in kitchen to save power
- PAINT -** High gloss acrylic paint

- PARKING -** Open and underground basement parking options
- LIFTS -** High speed passenger lifts & service lifts
- SECURITY -** 24/7 Security & CCTV cameras in relevant places
- POWER BACKUP -** DG power backup









## **MEGA QWALITY PROJECTS LLP**

Site Address: Between Phoenix Mall and Funcity,  
Pilibhit Bypass, Bareilly

Registered Office: C2 Mega City, Sanjay Nagar  
Bypass, Bareilly

[www.megaheights.in](http://www.megaheights.in)  
[info@megaheights.in](mailto:info@megaheights.in)

☎ 9690177555, 9690277555, 9690377555, 9690477555

Member of :

